

BOWLING & ARCADE
ROUND1

**COMPANY
PROFILE**



STORE CONCEPT

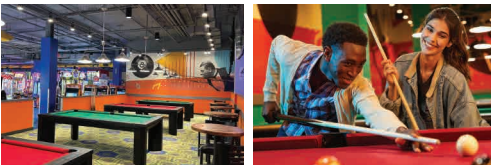


BOWLING



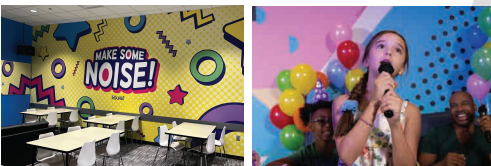
Bowling is a core element of Round1's business model. Round1 bowling alleys use the latest bowling technology and equipment.

BILLIARDS



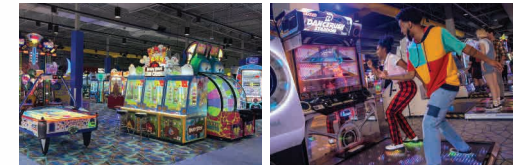
We offer Billiards, Ping Pong, and Darts in addition to our variety of entertainment. Our equipment are all tournament level, which allow customers to have the full experience.

KARAOKE



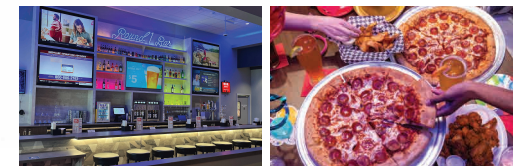
We offer the latest karaoke systems in private rooms. We have a variety of room sizes, ranging from small gatherings to big parties. The number of songs range from 50,000 to 70,000 in multiple languages and are updated monthly.

ARCADE GAMES



We offer one of the biggest indoor amusement facilities including over 300 game machines. We spearhead the trend in arcade by constantly importing the newest, most popular domestic and international games including about 60 Japanese machines.

FOOD & BEVERAGES



We offer a huge variety of choices in food and drinks, ranging from pizza to wings, and from soda to beer!



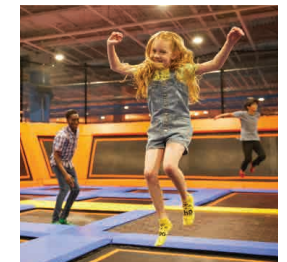
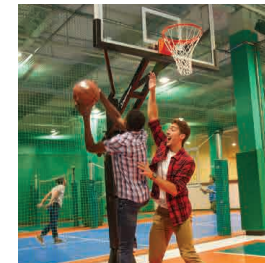
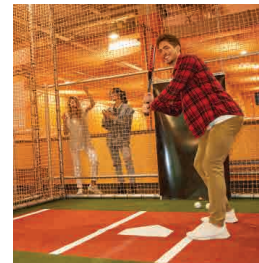


Round1's exciting all you can play concept has finally arrived!

Sports Challenge (SPO-CHA) is an additional indoor multi-sport and multi-entertainment activity section connected to our regular Round1 Bowling and Arcade facility. We're looking to fill 80,000+ square feet with entertainment, fun, and excitement!

SPO-CHA offers a variety of sports and entertainment activities all for the cost of a single entrance fee!

The entrance fee is all-inclusive, unlimited usage for all the activities offered within the SPO-CHA premises during the day of entrance purchased. Food and beverages will also be available for purchase within the SPO-CHA area as well. We envision many customers coming from far and wide to enjoy this unique experience that can only be offered at Round1 SPO-CHA. (Adult and kids prices varying)

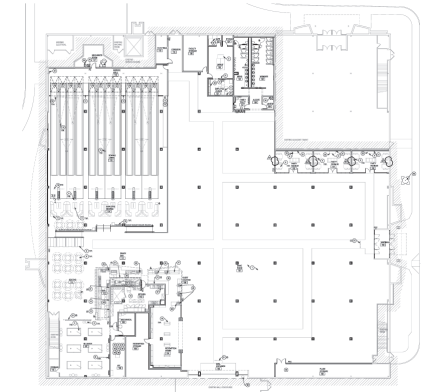


INFORMATION ON OUR PROTOTYPE FACILITIES

Standard Type

40,000 - 70,000 sqft

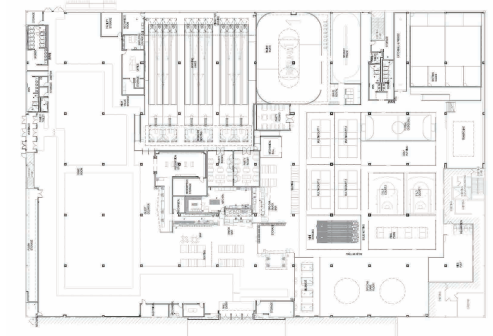
Bowling: 8-10 Lanes
Arcade: 350-400 Machines
Billiards: 4-6 Tables
Party/karaoke: 2-4 Rooms
Food & Bar: 100 Seats



Spo-Cha Type

80,000 - 120,000 sqft

Bowling: 8-10 Lanes
Arcade: 350-400 Machines
Billiards: 4-6 Tables
Party/Karaoke: 2-4 Rooms
Food & Bar: Over 100 Seats
Sports Challenge Facility
-Batting Cages, Roller Rink, Trampoline, Etc.
(50,000 to 70,000 sqft filled with a collection of sports amenities)



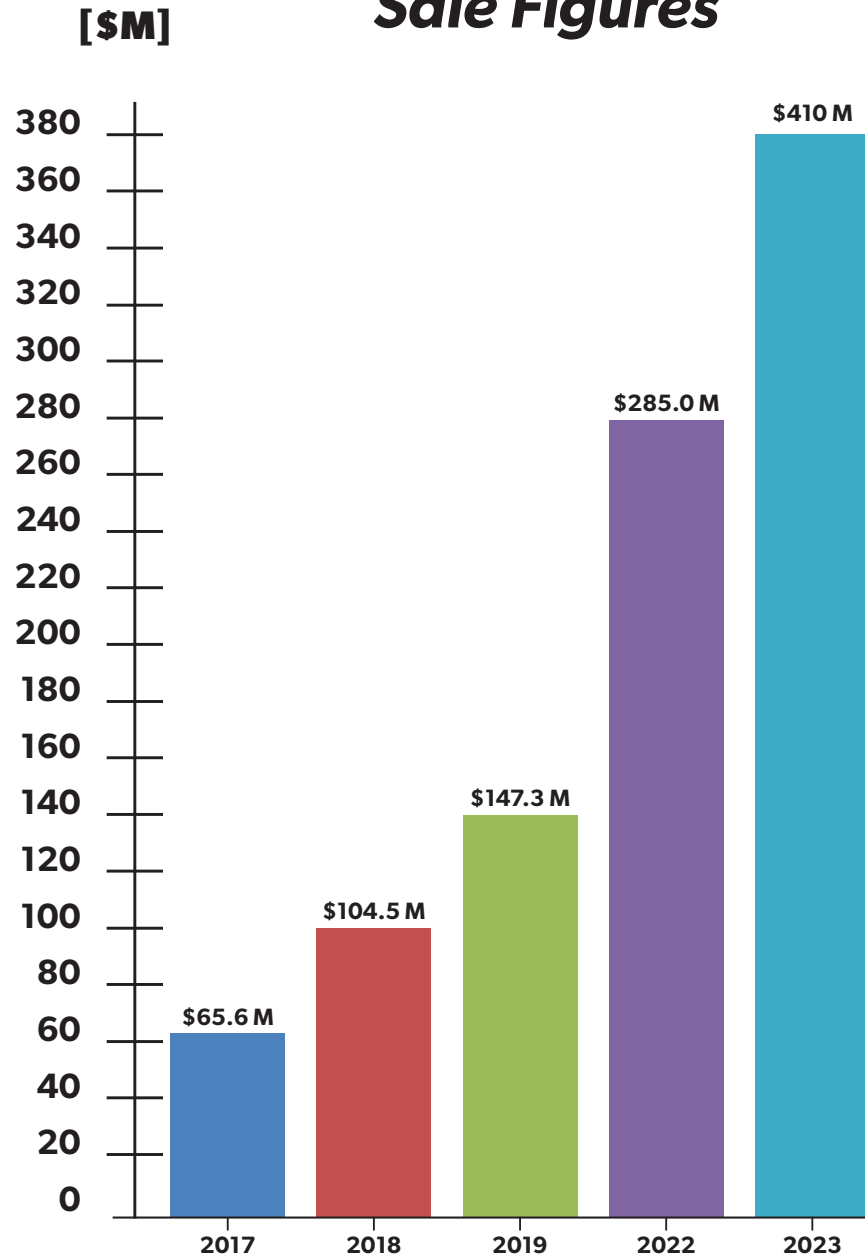
Amusement Facility

20,000 - 30,000 sqft

Arcade: 300 + Games
Food & Bar: 50 Seats



Sale Figures



Head Office: Brea, Ca

Established: April, 2009

Capital: \$410 Million (As of March, 2023)

Employees: 2,500 (As of Sept 2023)

Business: Operates complex amusement stores with Bowling, Arcade Games, Party/Karaoke, Billiards, and Ping Pong.

WHAT MAKES US DIFFERENT

Round1 is actively and aggressively looking to expand throughout the nation with a target rate of 10-15 stores annually. The following are some reasons why you would want to consider us to be your tenant.

We deliver an unparalleled Family Entertainment Experience

What family will turn down visiting a 50,000 sqft facility packed with fun? With our offering of bowling, arcade, pool tables, private karaoke rooms, ping pong, and food, Round1 will attract and keep families coming back to experience unforgettable time together.



Our estimated Foot Traffic is 1,000,000 annually per store*

*according to third party research

Round1 draws a great amount of traffic flow. The variety of activities available, ongoing events, and promotions keep customers wanting to come back for more!



We bring the latest cutting edge games straight from Japan!

Having more than 100 operating facilities in Japan, where our parent company is from, Round1 has the liberty of having access to brand new interactive games from all manufacturers. Some games are ordered exclusively for Round1 and you will not see them anywhere else in the country!



Market/Location Requirements

- At least 150,000 population within 5 miles, 400,000 population within 10 miles, and 500,000 population within 15 miles
- Must have direct access from parking lot and inside of the mall.
- Having a movie theater is a plus.
- We synergize well with restaurants and other entertainment and sport activity facilities.
- 400-500 Parking Spaces (can be shared)

Please submit all inquires and proposals to:

realestate@round1usa.com

or

Call us at: 714-924-7800 (ext 6)

